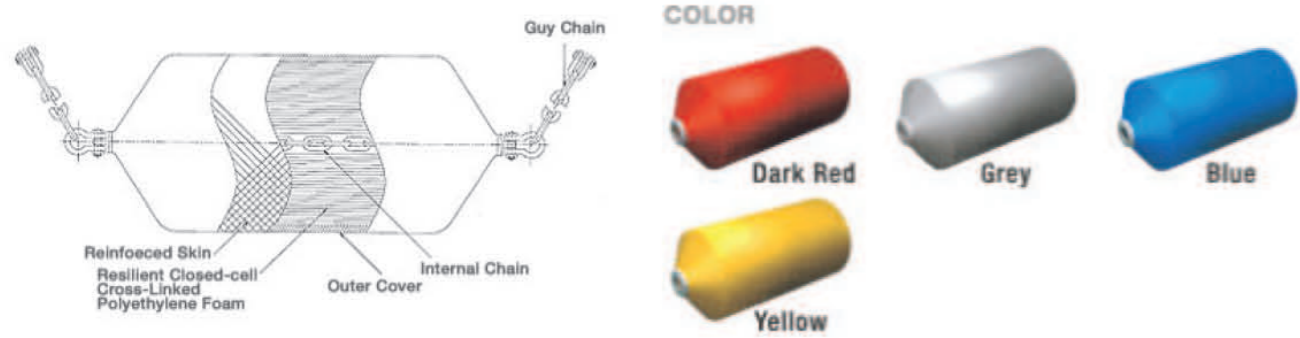


Floating Fenders



ENERGY-(tf-m) SIZE										
DWT		10,000		12,000		15,000		20,000		
VIRTUAL WEIGHT(T)		20,373		23,851		29,493		38,623		
APPROACHING VELOCITY (m/sec)		0,325		0,325		0,325		0,325		
DWT	VIRTUAL WEIGHT(T)									
10,000	20,373	27.4tf-m	2000×3500							
12,000	23,851	29.6	2000×3500	32.1tf-m	2200×4500					
15,000	29,493	32.5	2200×4500	35.5	2200×4500	39.7tf-m	2200×4500			
20,000	38,623	35.9	2200×4500	39.7	2200×4500	45.1	2200×4500	52.0tf-m	2500×4000	

ENERGY-(tf-m) SIZE										
DWT		25,000		30,000		40,000		50,000		
VIRTUAL WEIGHT(T)		45,946		56,093		72,771		89,818		
APPROACHING VELOCITY (m/sec)		0,325		0,325		0,325		0,325		
DWT	VIRTUAL WEIGHT(T)									
25,000	45,946	61.9tf-m	2500×4000							
30,000	56,093	68.1	2500×5500	75.6tf-m	2500×5500					
40,000	72,771	75.9	2500×5500	85.4	2500×5500	98.0tf-m	3300×4500			
50,000	89,818	81.9	2500×5500	93.0	2500×5500	108	3300×4500	11.6tf-m	2500×5500	

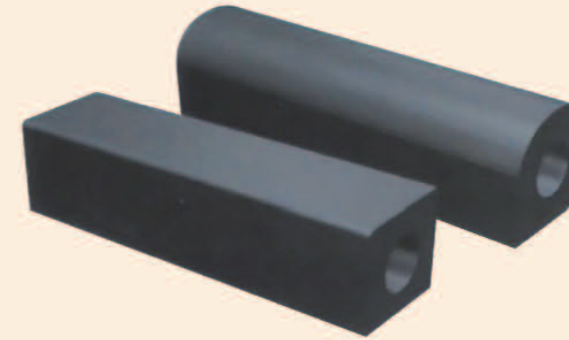
ENERGY-(tf-m) SIZE										
DWT		60,000		70,000		100,000		120,000		
VIRTUAL WEIGHT(T)		104,300		122,108		166,004		200,083		
APPROACHING VELOCITY (m/sec)		0,25		0,25		0,185		0,185		
DWT	VIRTUAL WEIGHT(T)									
60,000	104,300	83.1tf-m	2500×5500							
70,000	122,108	89.7	2500×5500	97.3tf-m	3300×4500					
100,000	166,004	102	3300×4500	112	3300×4500	72.5tf-m	2500×5500		2500×5500	
120,000	200,083	109	3300×4500	121	3300×6500	79.2	2500×5500	87.3tf-m	3300×4500	

ENERGY-(tf-m) SIZE										
DWT		10,000		12,000		15,000		20,000		
VIRTUAL WEIGHT(T)		20,373		23,851		29,493		38,623		
APPROACHING VELOCITY (m/sec)		0,325		0,325		0,325		0,325		
DWT	VIRTUAL WEIGHT(T)									
10,000	20,373	110tf-m	3300×4500							
12,000	23,851	124	3300×6500	143tf-m	3300×6500					
15,000	29,493	135	3300×6500	143	3300×6500	175tf-m	3300×6500			
20,000	38,623	151	3300×6500	143	3300×6500	175	3300×6500	240tf-m	3300×10600	

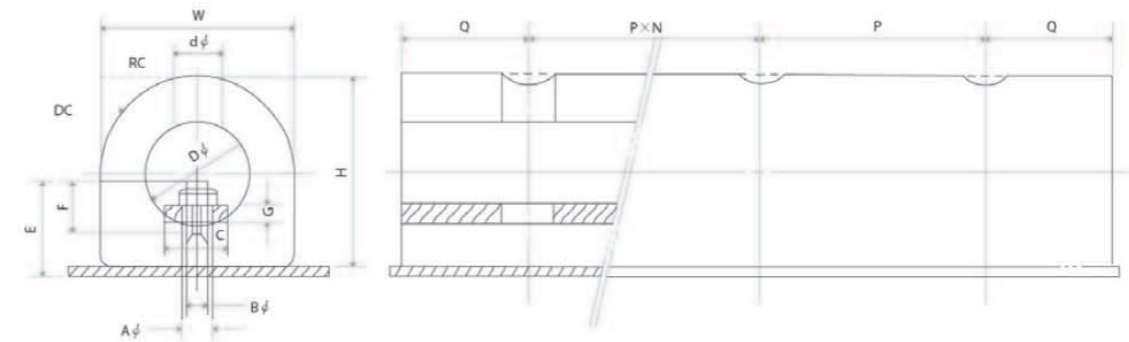
Ship Fenders

D-Type Fender

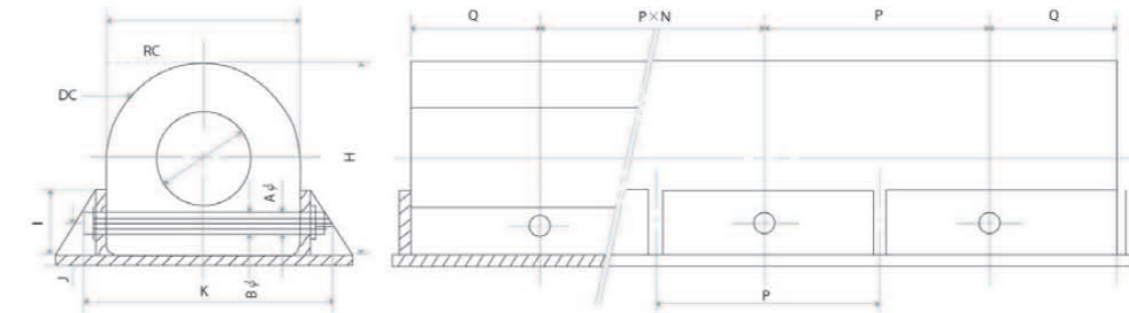
The volumes of energy absorption and reaction force of this fender are greater than those of hollow cylindrical fender. The side for attachment is flat so that it can be secured more firmly than cylindrical fender. The ratio among standard dimensions.



• Type A



• Type B



Fender Size	W	H	A	B	C	D	d	E	F	G	I	J	K	P	Q
150WH	150	150	22	19	50	75	60	80	40	16	60	26	220	250 ~ 350	150 ~ 200
200WH	200	200	25	22	65	100	65	95	50	19	75	35	280		
250WH	250	250	28	25	80	125	70	112	60	22	100	43	350		
300WH	300	300	32	28	90	150	80	132	70	25	125	52	400		
400WH	400	400	36	32	100	200	90	180	80	28	150	70	520		
500WH	500	500	42	38	120	250	100	210	90	32	175	88	640		

(Unit: mm)

